

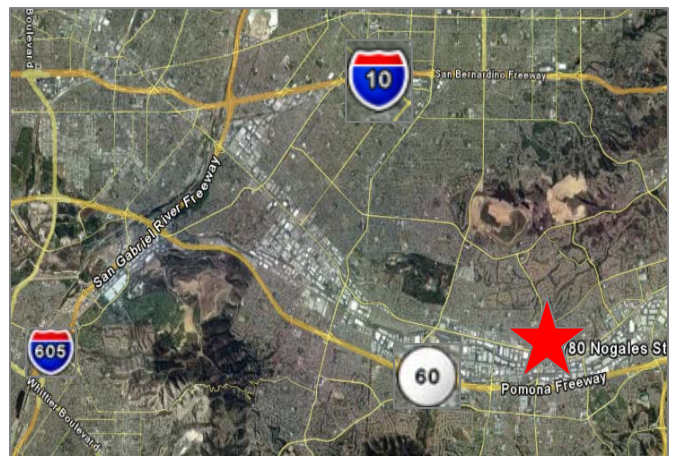
# FOR LEASE

# New Industrial Building



**710 Nogales St, City of Industry, CA** (SEC Nogales St & Valley Blvd)

- High Image – Major Street Frontage
- 16,694 Square Feet
- 4,038 SF High Image office Space
- 2 Dock High Doors
- 1 Ground Level Door
- 26' Minimum Ceiling Height
- Highly Calculated Sprinkler System
- Full Concrete Truck Court
- Immediate Access to 60 Freeway via Nogales Street



Another Project By:



[www.dedeauxproperties.com](http://www.dedeauxproperties.com)

**For Further Information Contact:**

**Brett Dedeaux**  
(213) 892-8881 x209  
brettd@raginc.com  
RE #01218734

**Rustin Mork**  
(213) 892-8881 x206  
rustin@raginc.com  
RE # 01448642

**Mark Repstad**  
(213) 892-8881 x369  
mrepstad@raginc.com  
RE #01492673

**Anthony Dedeaux**  
(213) 892-8881 x208  
anthonyd@raginc.com  
RE #01862522



**Binswanger / Realty Advisory Group**  
Regional – National – International Real Estate  
[WWW.BINSWANGER.COM](http://WWW.BINSWANGER.COM)  
[WWW.RAGINC.COM](http://WWW.RAGINC.COM)

# 708-716 Nogales St, City of Industry, CA

## Site Plan



Street #	Warehouse	2-Story Office	TOTAL (Square Feet)	
708	15,857	5,076	20,933	<b>LEASED</b>
710	12,656	4,038	16,694	
712	11,860	3,516	15,376	<b>LEASED</b>
716	13,659	4,930	18,589	<b>LEASED</b>

Another Project By:



[www.dedeauxproperties.com](http://www.dedeauxproperties.com)

### For Further Information Contact:

### Binswanger / Realty Advisory Group

Regional - National - International Real Estate

[WWW.BINSWANGER.COM](http://WWW.BINSWANGER.COM)

[WWW.RAGINC.COM](http://WWW.RAGINC.COM)

**Brett Dedeaux**  
 (213) 892-8881 x209  
[brettd@raginc.com](mailto:brettd@raginc.com)  
 RE #01218734

**Rustin Mork**  
 (213) 892-8881 x206  
[rustin@raginc.com](mailto:rustin@raginc.com)  
 RE #01448642

**Mark Repstad**  
 (213) 892-8881 x369  
[mrepstad@raginc.com](mailto:mrepstad@raginc.com)  
 RE #01492673

**Anthony Dedeaux**  
 (213) 892-8881 x208  
[anthonyd@raginc.com](mailto:anthonyd@raginc.com)  
 RE #01862522

